

ABOVE GROUND POST MOUNTED

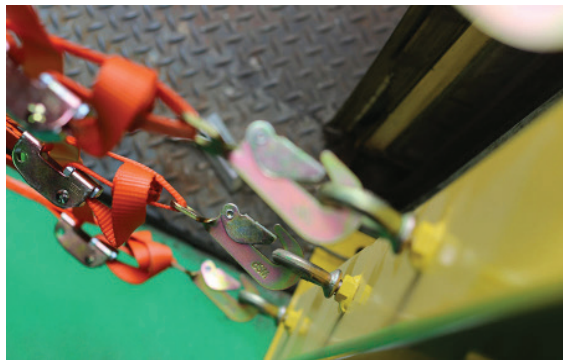
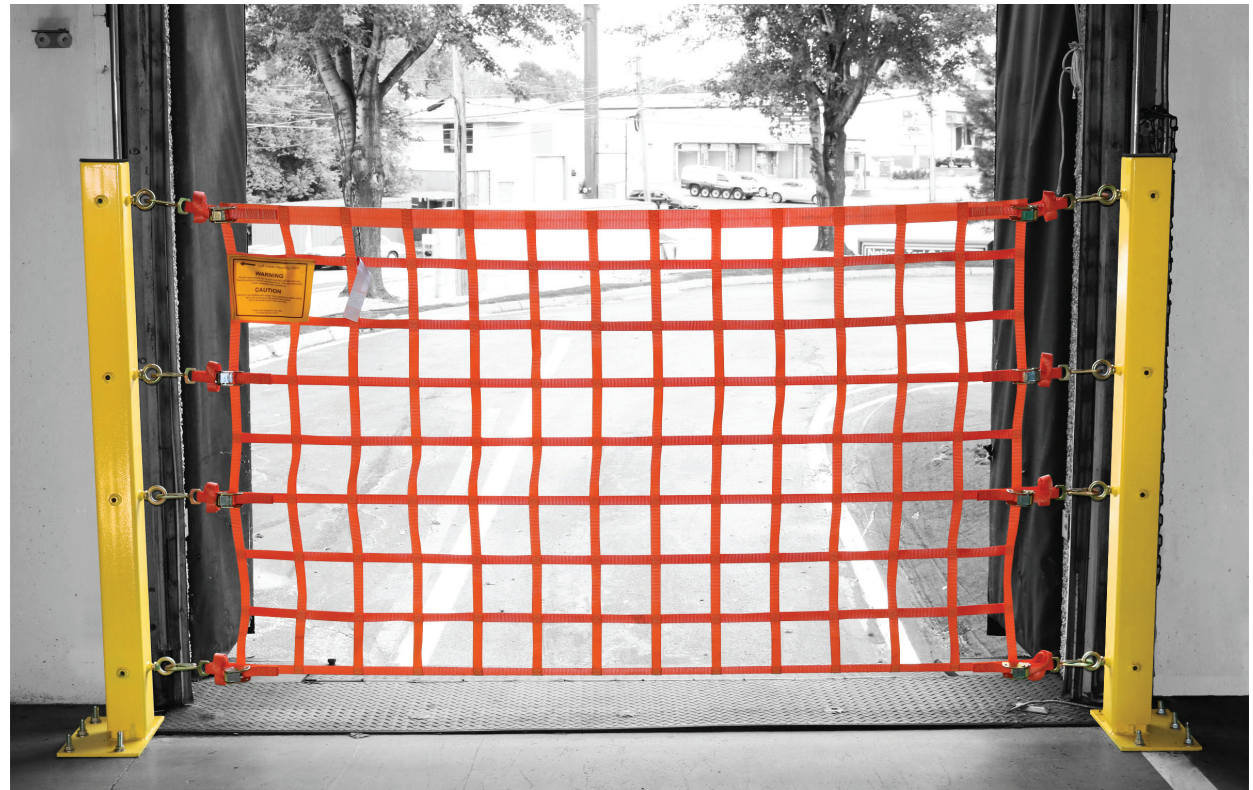
LOADING DOCK NET

SPECIFICATIONS:

- 4 feet tall
- Webbing Material: 1 inch wide polyester
- Color: Safety Orange
- 2-inch webbing top weight bearing strap
- Mesh Size: 6 inch on center
- (4) 3 foot adjustment straps on each side
- Snap hooks & cam buckles on each strap

INCLUDED HARDWARE:

- (2) Bollard post bases
- (2) Removable posts
- (8) Eye Bolts
- (12) 1-1/2 inch Lag Bolts
- Drill bit for pilot holes
- Marker for measurement



MFR. PART #	SIZE(ft.):
OHPW46-P	4' x 6'
OHPW48-P	4' x 8'
OHPW49-P	4' x 9'
OHPW410-P	4' x 10'
OHPW412-P	4' x 12'
OHPW414-P	4' x 14'
OHPW416-P	4' x 16'
OHPW418-P	4' x 18'
OHPW420-P	4' x 20'
OHPW422-P	4' x 22'
OHPW424-P	4' x 24'
OHPW426-P	4' x 26'
OHPW428-P	4' x 28'
OHPW430-P	4' x 30'
OHPW432-P	4' x 32'